

FIND AN ANSWER

Browse our vast Answer database for answers to many common technical questions.

Search the Knowledge Base...



MUTE SWITCH WITH PHANTOM POWER

🕒 25-JAN-2022 KNOWLEDGE

Question

I need to get rid of the popping noise when hooking up an electret type microphone. I assume it is the phantom power that is making the noise. It is currently wired as a Push-to-Talk. Any suggestions?

Answer

Two different circuits for mic muting when phantom voltage is present. Either one will work. Note that neither circuit provides infinite muting (complete elimination of the mic signal), but does reduce the mic signal level substantially, typically greater than 50 dB.

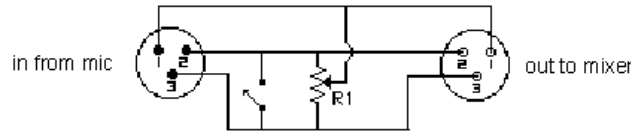
RELATED ARTICLES

What is Phantom Power? [\(/s/article/what-is-phantom-power\)](/s/article/what-is-phantom-power) 👁 16,13K

Difference between bias (plug-in power) and phantom power? [\(/s/article/difference-between-bias-plug-in-power-and-phantom-power\)](/s/article/difference-between-bias-plug-in-power-and-phantom-power) 👁 18,57K

Phantom Power and Cable Length [\(/s/article/phantom-power-and-cable-length\)](/s/article/phantom-power-and-cable-length) 👁 2,94K

Circuit must be in metal box with box grounded to pin 1

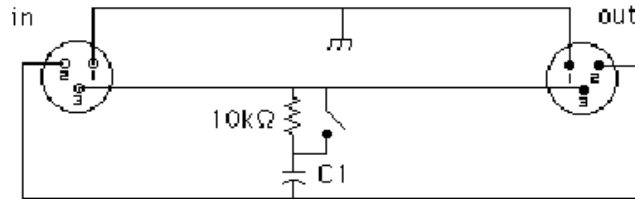


Switch shorts mic audio. Adjust potentiometer for minimum thump when switch is closed.

R1 > 100kohm (exact value not critical)

Phantom power with Super 55
(/s/article/phanto 3,16K
m-power-with-super-55)

55SH Series II and Phantom Power?
(/s/article/55sh-series-ii-and-phantom-power) 4,19K



C1=2200uF, 6Vdc for 150 ohm mic

C1=1000uF, 6Vdc for 600 ohm mic

This circuit must be in a shielded enclosure.

Last Edit Date

1/25/2022



SIGN UP FOR OUR NEWSLETTER

([HTTPS://WWW.SHURE.COM/EN-US/META/NEWSLETTER](https://www.shure.com/en-us/meta/newsletter))

ABOUT US ([HTTPS://WWW.SHURE.COM/EN-US/ABOUT-US](https://www.shure.com/en-us/about-us))

PERFORMANCE & PRODUCTION ([HTTPS://WWW.SHURE.COM/EN-US/PERFORMANCE-PRODUCTION](https://www.shure.com/en-us/performance-production))

CONFERENCING & MEETINGS ([HTTPS://WWW.SHURE.COM/EN-US/CONFERENCING-MEETINGS](https://www.shure.com/en-us/conferencing-meetings))

HEADPHONES & EARPHONES ([HTTPS://WWW.SHURE.COM/EN-US/HEADPHONES-EARPHONES](https://www.shure.com/en-us/headphones-earphones))

SUPPORT ([HTTPS://WWW.SHURE.COM/EN-US/SUPPORT](https://www.shure.com/en-us/support))

SERVICE & REPAIR
([HTTPS://WWW.SHURE.COM/EN-US/SERVICE-REPAIR](https://www.shure.com/en-us/service-repair))

US/EN/PARTS/SERVICE-
(HTTPS://WWW.SHURE.COM/EN-
US/SUPPORT/FIND-AN-
ANSWER)
SHURE AUDIO
INSTITUTE
(HTTPS://WWW.SHURE.COM/EN-
US/SUPPORT/SHURE-
DOWNLOADS)
(HTTPS://WWW.SHURE.COM/EN-
US/SUPPORT/DOWNLOADS)
TOOLS
(HTTPS://WWW.SHURE.COM/EN-
US/SUPPORT/TOOLS)
WIRELESS SPECTRUM
(HTTPS://WWW.SHURE.COM/EN-
US/SUPPORT/WIRELESS-
SPECTRUM)
DISCONTINUED
PRODUCTS
(HTTPS://WWW.SHURE.COM/EN-
US/SUPPORT/DISCONTINUED)
SWEET SPEAKERS RULES
(HTTPS://WWW.SHURE.COM/EN-
US/SUPPORT/RULES)
SUPPLIER
PARTNERSHIP
HANDBOOK

SHURE (https://www.shure.com/en-US)
SOUND EXTRAORDINARY